



DATA SHEET

Model No. TSP-20

2" Self-Priming Sump Pump

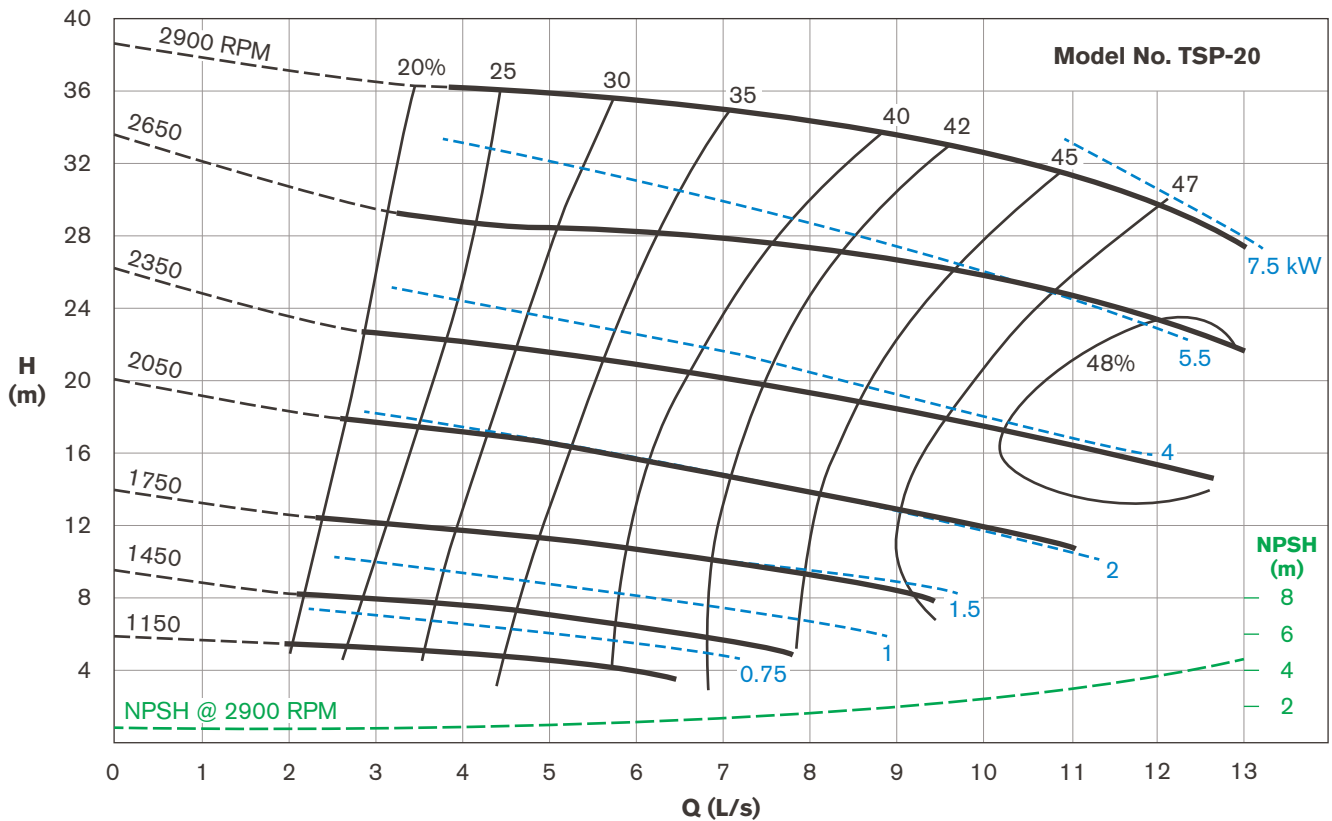
The TORO TSP Self-Priming Sump Pump range are rugged solids-handling pumps designed for demanding industrial and municipal applications where trouble-free operation and long life are required.

Featuring quick release clean-out ports, replaceable wear plate with adjustable impeller clearance, back pull-out design, and oil lubricated tungsten mechanical seals, the TORO TSP Range are available in cast-iron, 316 stainless steel, duplex or super-duplex construction, with NBR (standard) or Viton rubber components.

Units can be supplied direct-coupled or belt driven by electric motors or stationary engines, skid or trailer mounted.



Performance curve





DATA SHEET

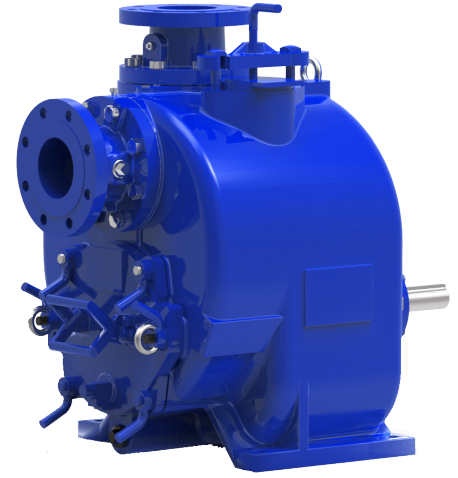
Model No. TSP-30

3" Self-Priming Sump Pump

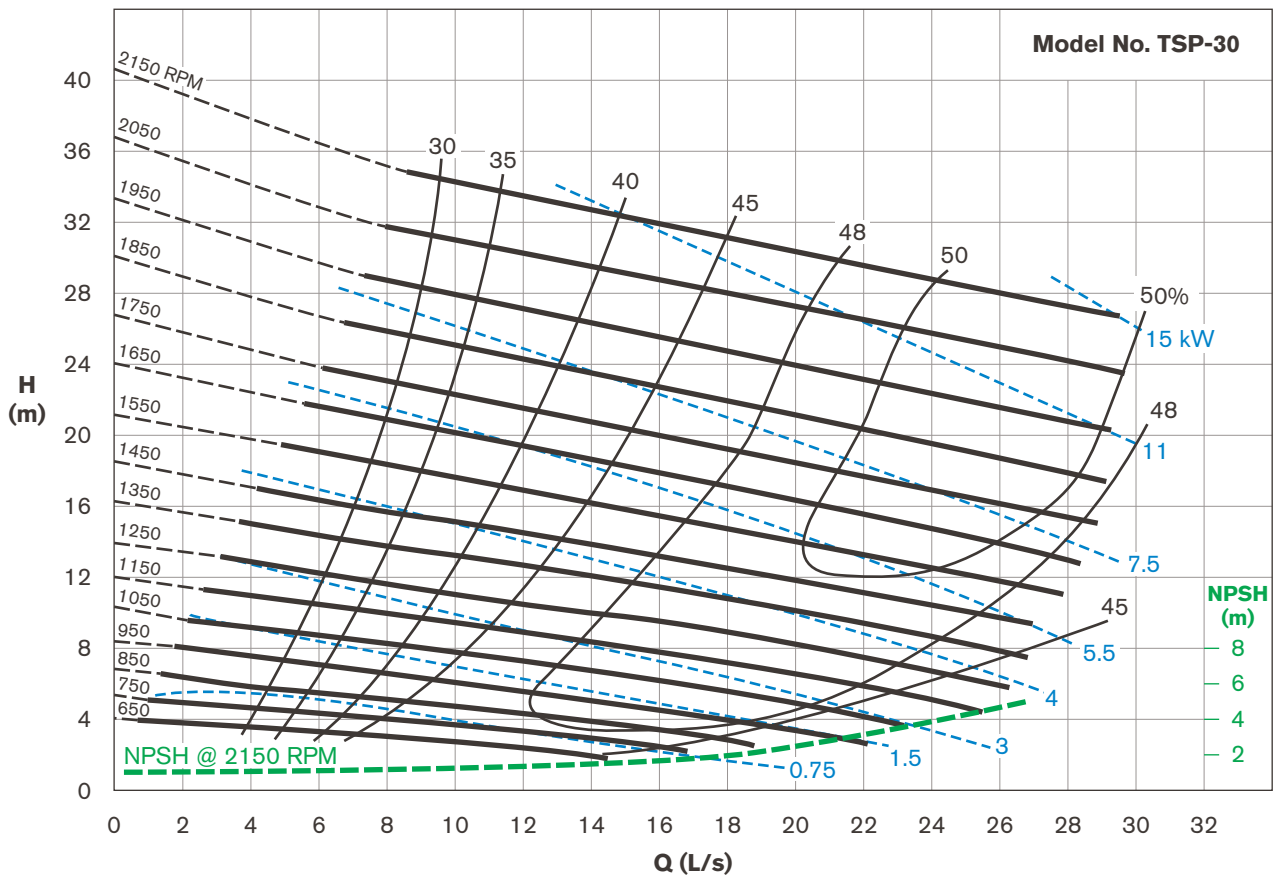
The TORO TSP Self-Priming Sump Pump range are rugged solids-handling pumps designed for demanding industrial and municipal applications where trouble-free operation and long life are required.

Featuring quick release clean-out ports, replaceable wear plate with adjustable impeller clearance, back pull-out design, and oil lubricated tungsten mechanical seals, the TORO TSP Range are available in cast-iron, 316 stainless steel, duplex or super-duplex construction, with NBR (standard) or Viton rubber components.

Units can be supplied direct-coupled or belt driven by electric motors or stationary engines, skid or trailer mounted.



Performance curve



DATA SHEET

Model No. TSP-30

3" Self-Priming Sump Pump

Technical data

Inlet/outlet (mm)	3" ANSI 150
Solids (mm)	63.5
Speed (RPM) max.	2150
Impeller diameter (mm)	222
Weight (kg)	183

Reprime suction lift

- 1050 RPM – 4.0 m
- 1450 RPM – 6.4 m
- 1650 RPM – 6.7 m
- 2150 RPM – 7.6 m

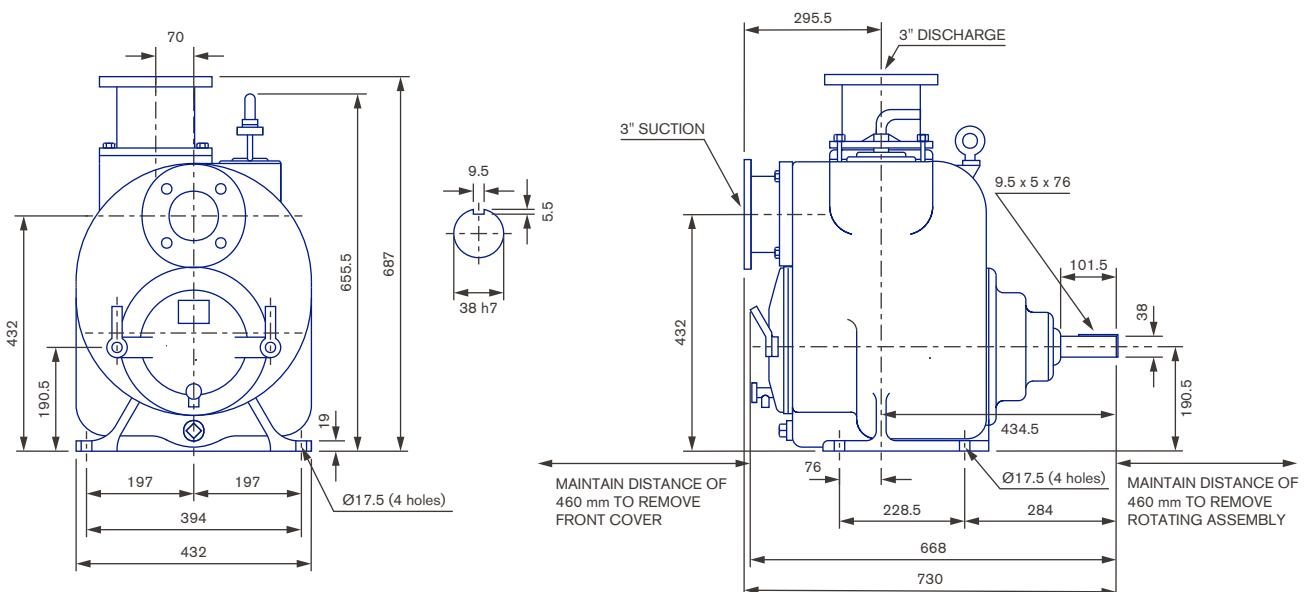
Note: Check system NPSH for actual suction lift

Applications

- wastewater treatment
- abattoirs and rendering plants
- septic effluent schemes
- mobile stormwater pumping
- emergency sewer by-pass
- winery crusher pits
- acidic and super-saline solutions
- gravel wash plants
- waste sumps and bunded areas
- abrasive sludges
- site dewatering
- wool scouring plants
- tanker loading/unloading



Dimensions (mm)





DATA SHEET

Model No. TSP-40

4" Self-Priming Sump Pump

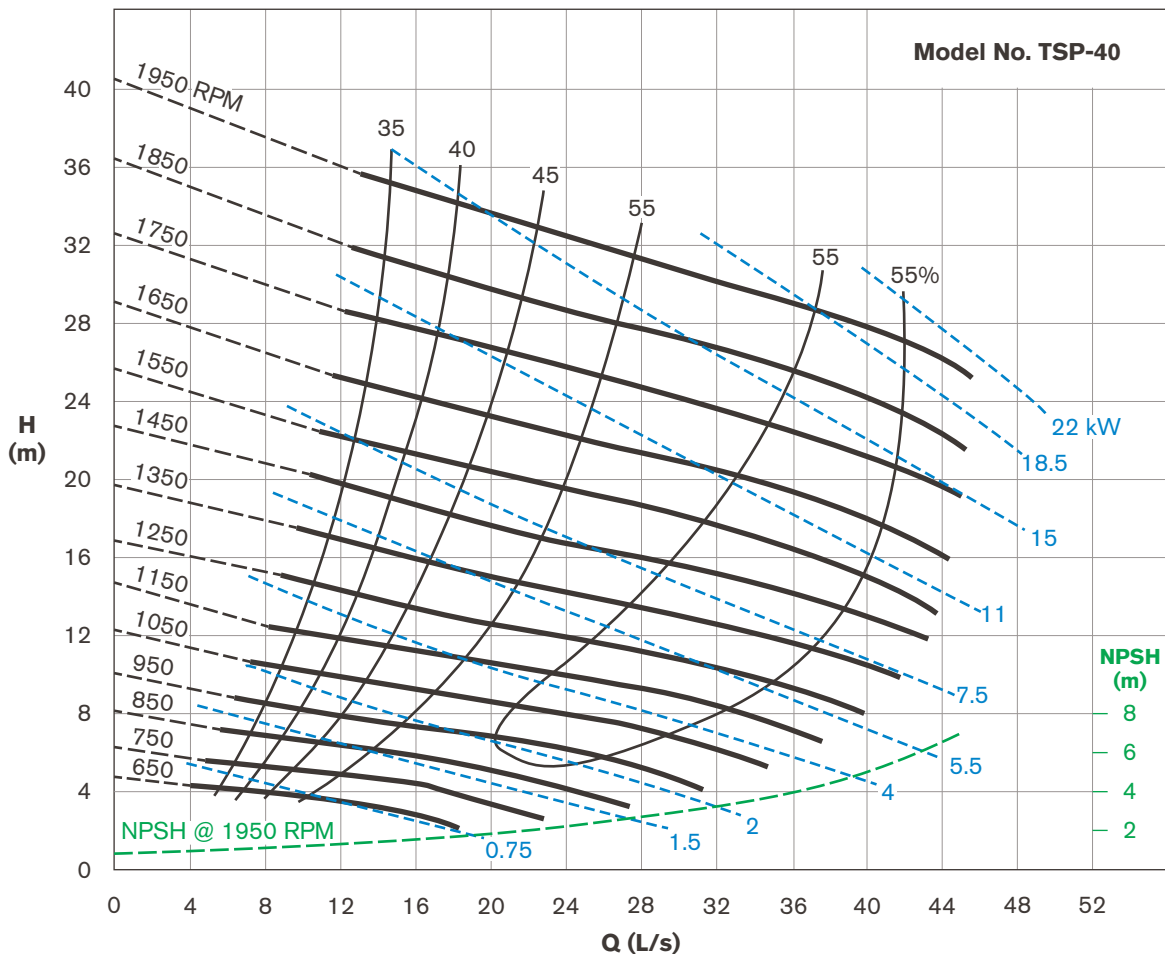
The TORO TSP Self-Priming Sump Pump range are rugged solids-handling pumps designed for demanding industrial and municipal applications where trouble-free operation and long life are required.

Featuring quick release clean-out ports, replaceable wear plate with adjustable impeller clearance, back pull-out design, and oil lubricated tungsten mechanical seals, the TORO TSP Range are available in cast-iron, 316 stainless steel, duplex or super-duplex construction, with NBR (standard) or Viton rubber components.

Units can be supplied direct-coupled or belt driven by electric motors or stationary engines, skid or trailer mounted.



Performance curve



Technical data

Inlet/outlet (mm)	4" ANSI 150
Solids (mm)	76
Speed (RPM) max.	1950
Impeller diameter (mm)	247.5
Weight (kg)	260

Reprime suction lift

- 650 RPM – 1.5 m
- 850 RPM – 4.9 m
- 1050 RPM – 7.6 m
- 1250 RPM to 1950 RPM – 7.6 m

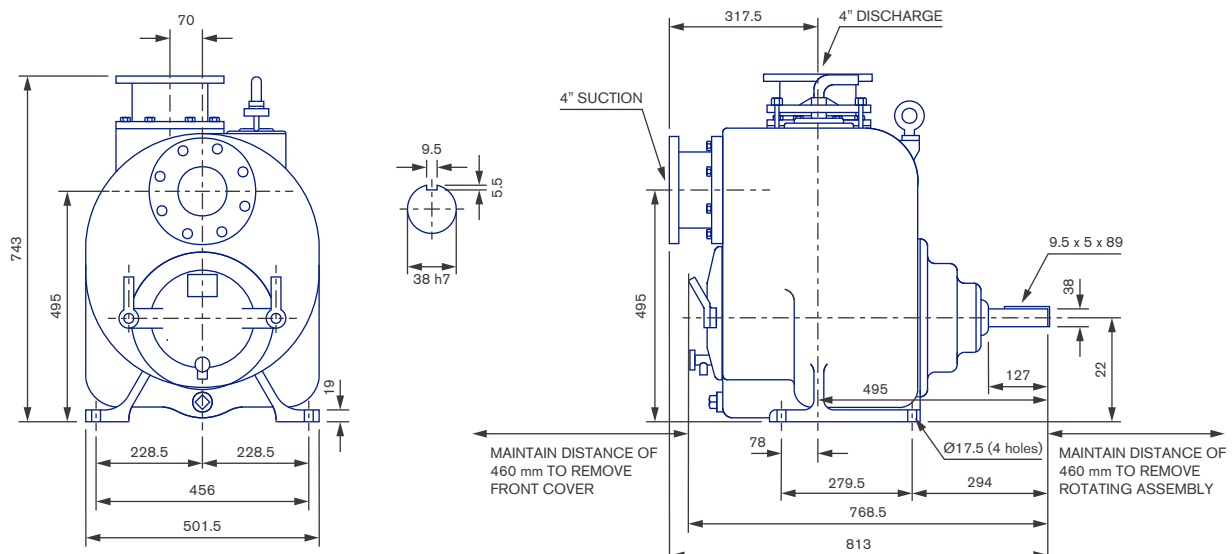
Note: Check system NPSH for actual suction lift

Applications

- wastewater treatment
- abattoirs and rendering plants
- septic effluent schemes
- mobile stormwater pumping
- emergency sewer by-pass
- winery crusher pits
- acidic and super-saline solutions
- gravel wash plants
- waste sumps and bunded areas
- abrasive sludges
- site dewatering
- wool scouring plants
- tanker loading/unloading



Dimensions (mm)





DATA SHEET

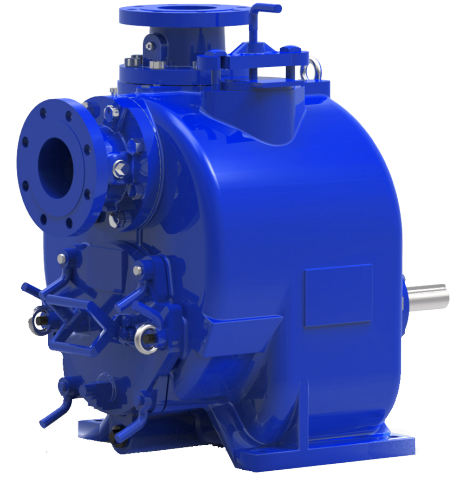
Model No. TSP-60

6" Self-Priming Sump Pump

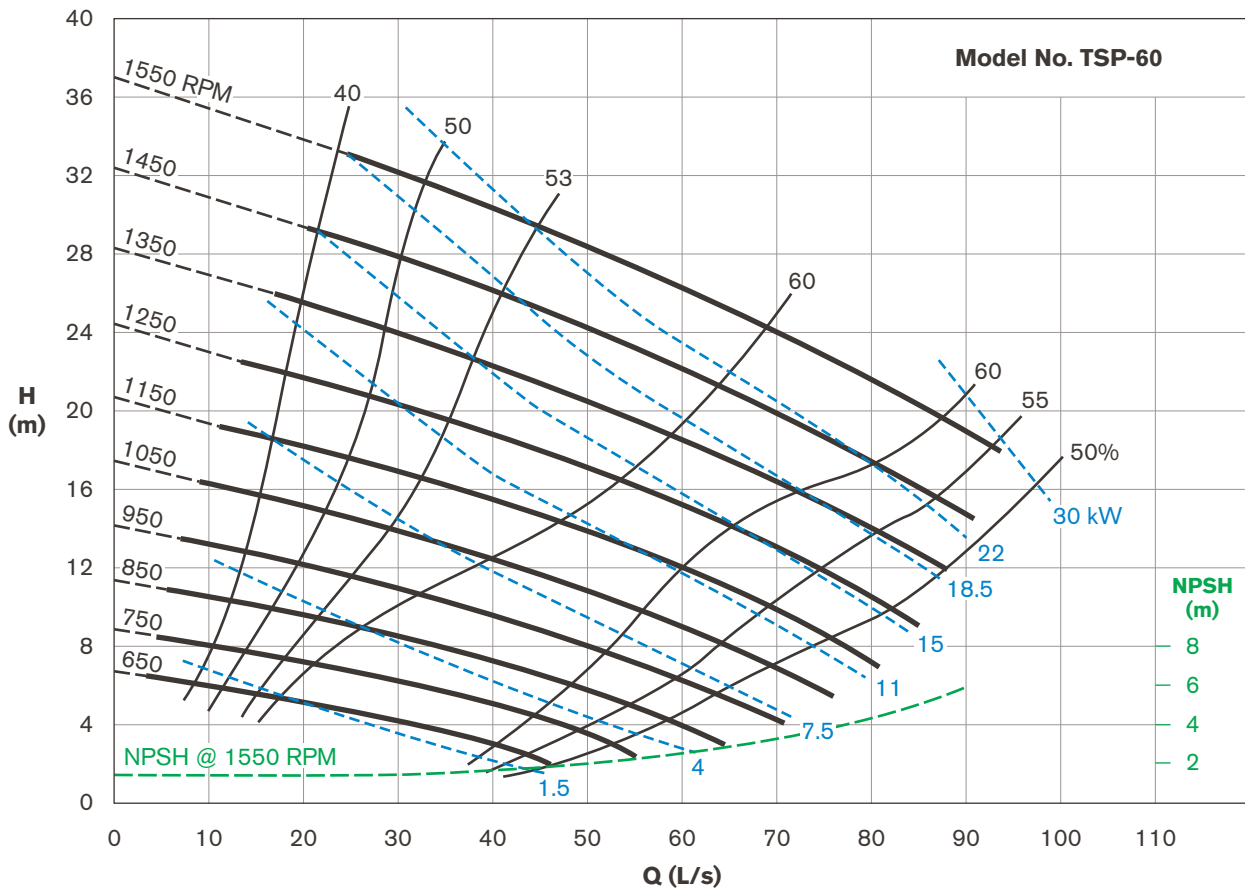
The TORO TSP Self-Priming Sump Pump range are rugged solids-handling pumps designed for demanding industrial and municipal applications where trouble-free operation and long life are required.

Featuring quick release clean-out ports, replaceable wear plate with adjustable impeller clearance, back pull-out design, and oil lubricated tungsten mechanical seals, the TORO TSP Range are available in cast-iron, 316 stainless steel, duplex or super-duplex construction, with NBR (standard) or Viton rubber components.

Units can be supplied direct-coupled or belt driven by electric motors or stationary engines, skid or trailer mounted.



Performance curve



DATA SHEET

Model No. TSP-60

6" Self-Priming Sump Pump

Technical data

Inlet/outlet flange	6" ANSI 150
Solids size (mm)	76
Speed (RPM) max.	1550
Impeller diameter (mm)	314
Weight (kg)	364

Reprime suction lift

- 650 RPM – 2.4 m
- 850 RPM – 3.6 m
- 950 RPM – 4.2 m
- 1150 RPM – 6.4 m
- 1450 RPM – 7.0 m
- 1550 RPM – 7.6 m

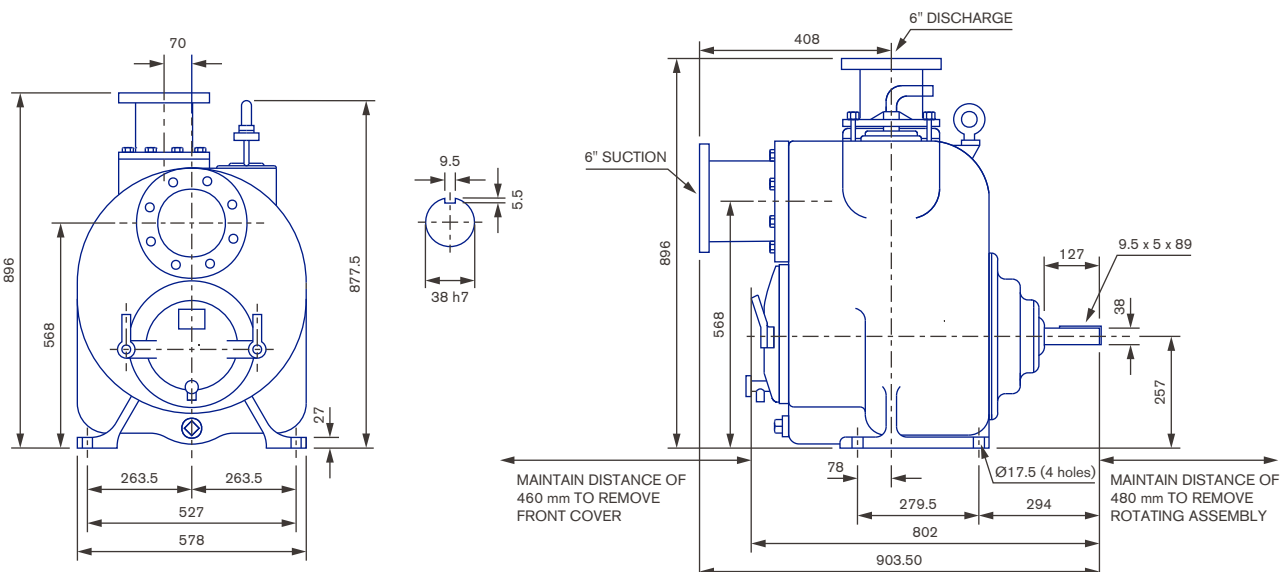
Note: Check system NPSH for actual suction lift

Applications

- wastewater treatment
- abattoirs and rendering plants
- septic effluent schemes
- mobile stormwater pumping
- emergency sewer by-pass
- winery crusher pits
- acidic and super-saline solutions
- gravel wash plants
- waste sumps and banded areas
- abrasive sludges
- site dewatering
- wool scouring plants
- tanker loading/unloading



Dimensions (mm)





DATA SHEET

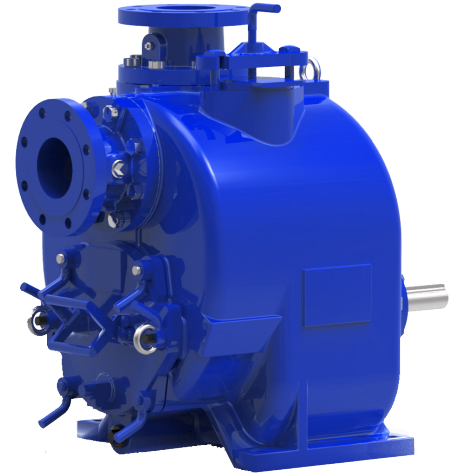
Model No. TSP-80

8" Self-Priming Sump Pump

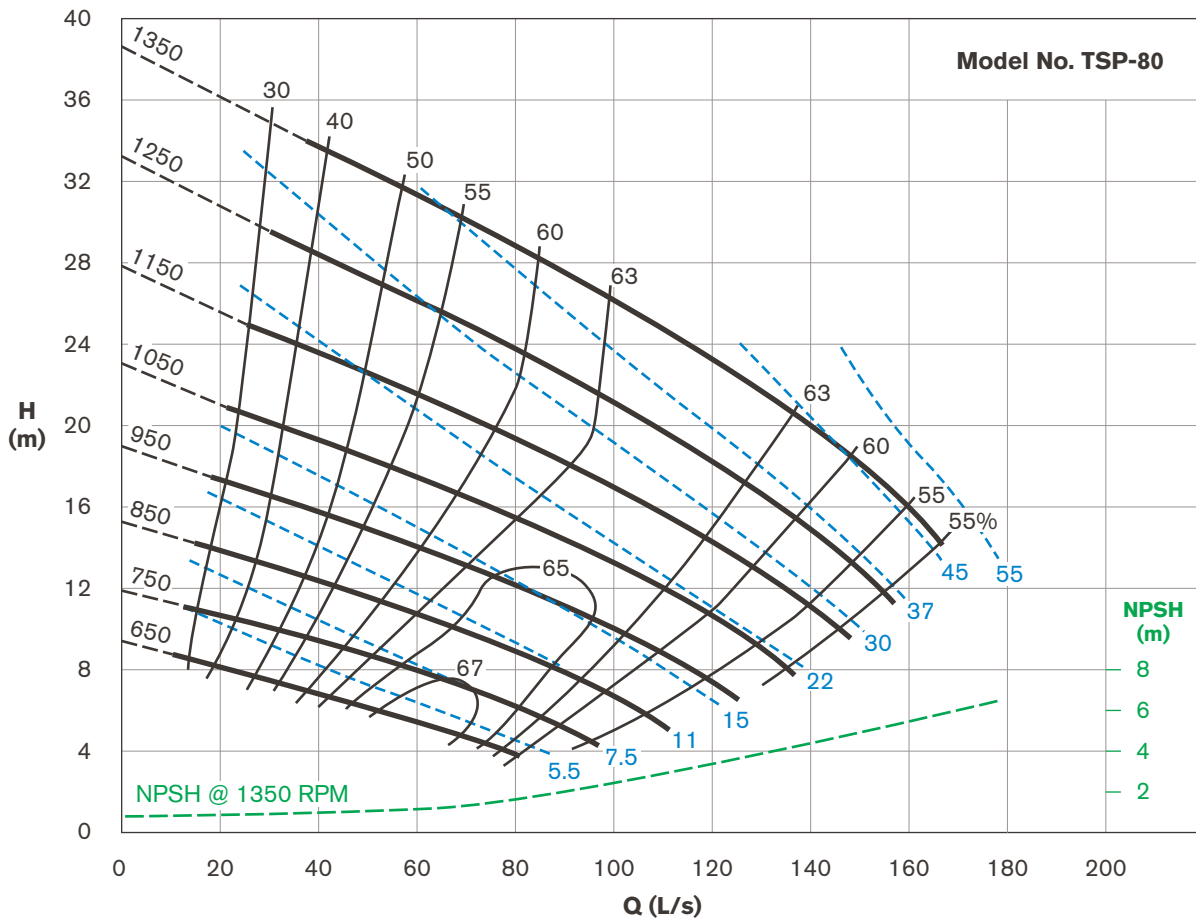
The TORO TSP Self-Priming Sump Pump range are rugged solids-handling pumps designed for demanding industrial and municipal applications where trouble-free operation and long life are required.

Featuring quick release clean-out ports, replaceable wear plate with adjustable impeller clearance, back pull-out design, and oil lubricated tungsten mechanical seals, the TORO TSP Range are available in cast-iron, 316 stainless steel, duplex or super-duplex construction, with NBR (standard) or Viton rubber components.

Units can be supplied direct-coupled or belt driven by electric motors or stationary engines, skid or trailer mounted.



Performance curve



DATA SHEET

Model No. TSP-80

8" Self-Priming Sump Pump

Technical data

Inlet/outlet flange	8" ANSI 150
Solids (mm)	76
Speed (RPM) max.	1350
Impeller diameter (mm)	374
Weight (kg)	581

Reprime suction lift

- 650 RPM – 2.7 m
- 950 RPM – 5.2 m
- 1150 RPM – 6.4 m
- 1350 RPM – 7.0 m

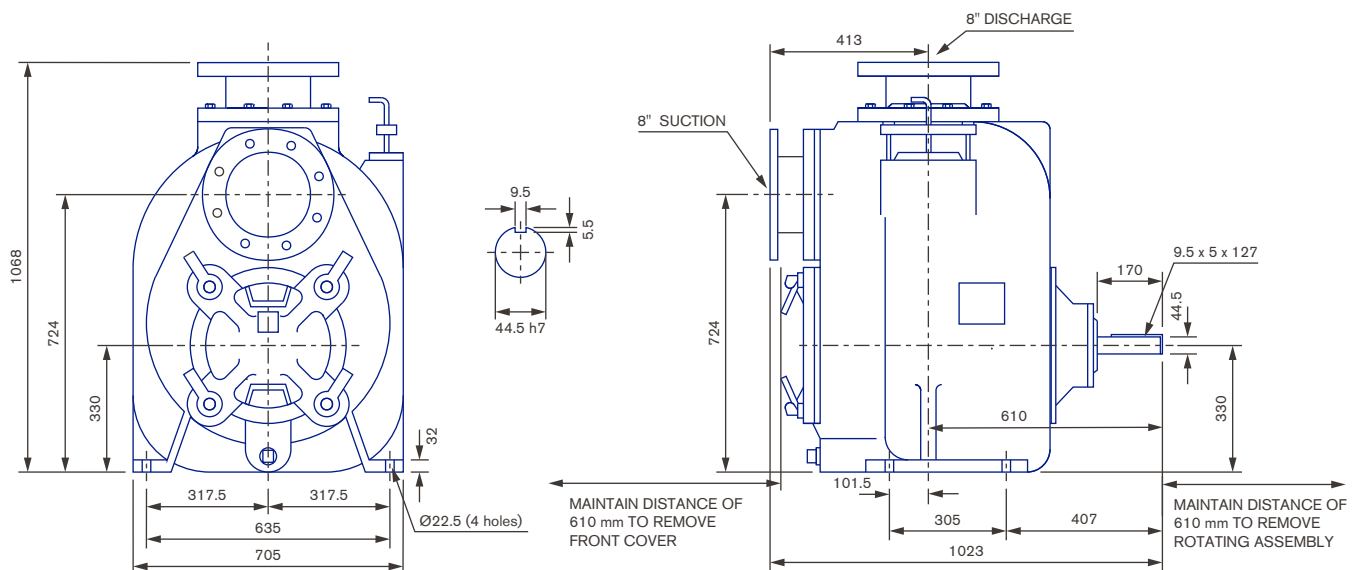
Note: Check system NPSH for actual suction lift

Applications

- wastewater treatment
- abattoirs and rendering plants
- septic effluent schemes
- mobile stormwater pumping
- emergency sewer by-pass
- winery crusher pits
- acidic and super-saline solutions
- gravel wash plants
- waste sumps and banded areas
- abrasive sludges
- site dewatering
- wool scouring plants
- tanker loading/unloading



Dimensions (mm)





DATA SHEET

Model No. TSP-100

10" Self-Priming Sump Pump

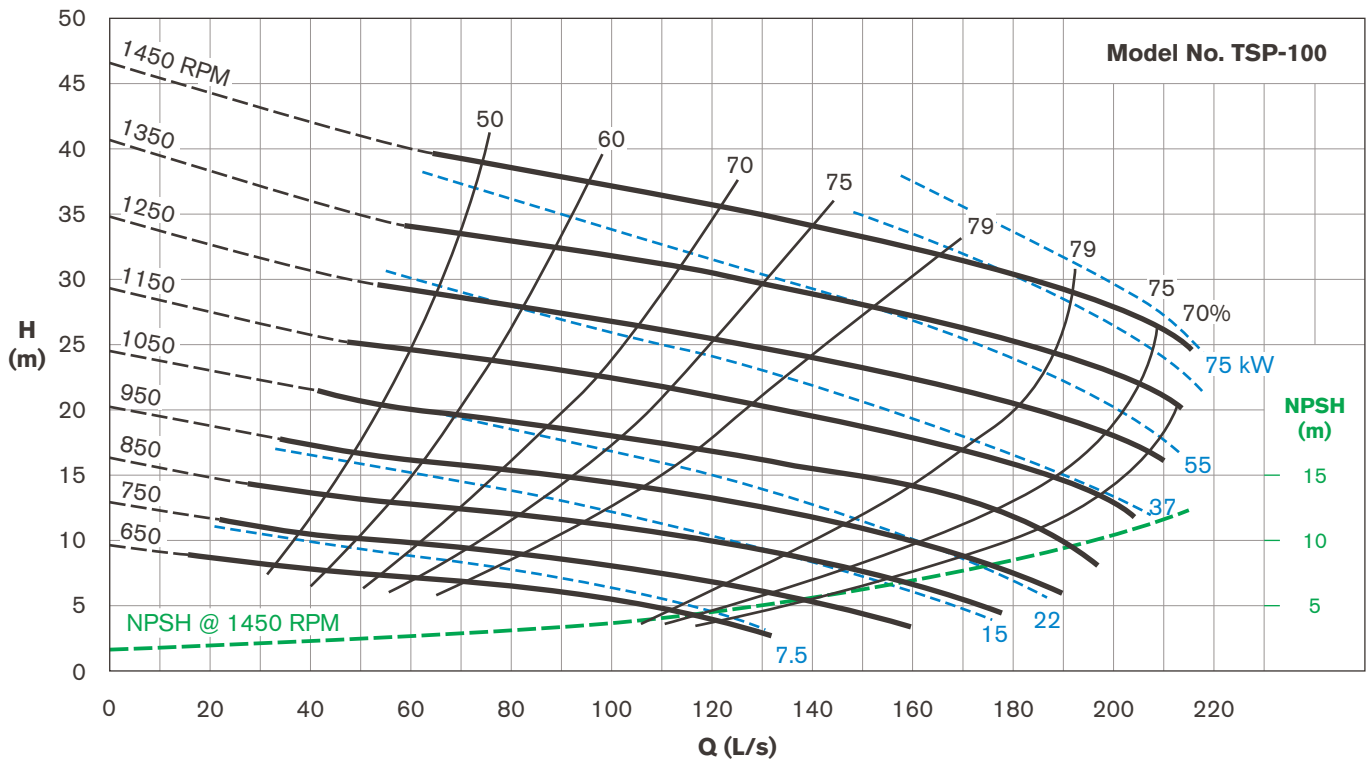
The TORO TSP Self-Priming Sump Pump range are rugged solids-handling pumps designed for demanding industrial and municipal applications where trouble-free operation and long life are required.

Featuring quick release clean-out ports, replaceable wear plate with adjustable impeller clearance, back pull-out design, and oil lubricated tungsten mechanical seals, the TORO TSP Range are available in cast-iron, 316 stainless steel, duplex or super-duplex construction, with NBR (standard) or Viton rubber components.

Units can be supplied direct-coupled or belt driven by electric motors or stationary engines, skid or trailer mounted.



Performance curve



Technical data

Inlet/outlet flange	10" ANSI 150
Solids (mm)	76
Speed (RPM) max.	1450
Impeller diameter (mm)	374.5
Weight (kg)	635

Reprime suction lift

- 650 RPM – 2.1 m
- 950 RPM – 5.2 m
- 1150 RPM – 5.5 m
- 1450 RPM – 6.7 m

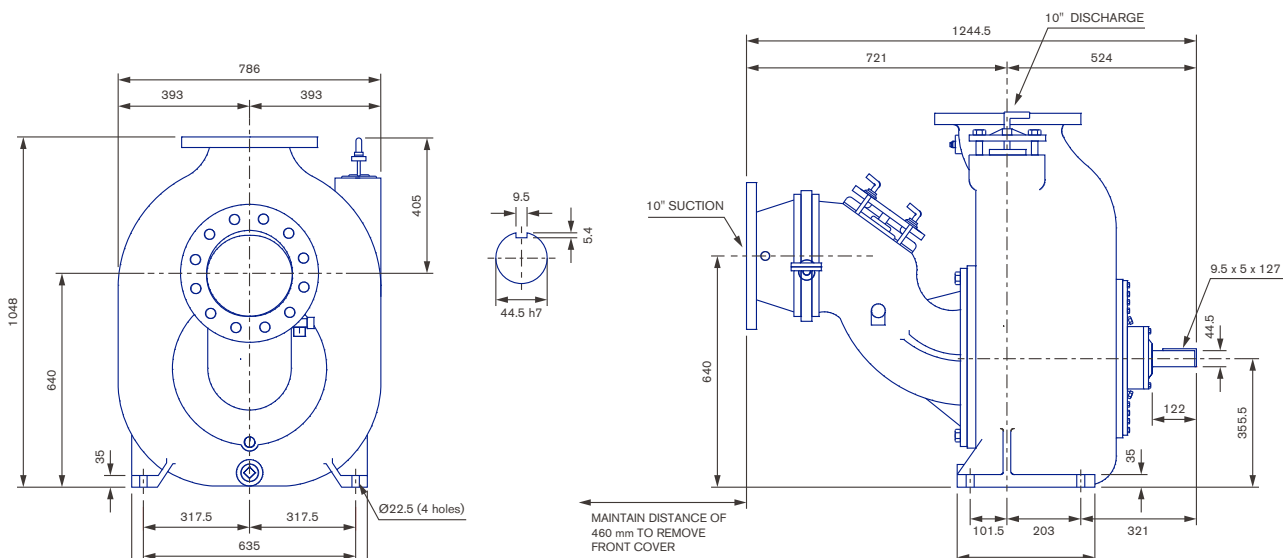
Note: Check system NPSH for actual suction lift

Applications

- wastewater treatment
- abattoirs and rendering plants
- septic effluent schemes
- mobile stormwater pumping
- emergency sewer by-pass
- winery crusher pits
- acidic and super-saline solutions
- gravel wash plants
- waste sumps and banded areas
- abrasive sludges
- site dewatering
- wool scouring plants
- tanker loading/unloading



Dimensions (mm)



DATA SHEET

Model No. TSP-20

2" Self-Priming Sump Pump

Technical data

Inlet/outlet (mm)	2" ANSI 150
Solids (mm)	44.5
Speed (RPM) max.	2900
Impeller diameter (mm)	159
Weight (kg)	92

Reprime suction lift

- 1150 RPM – 7.3 m
- 1450 RPM to 2900 RPM – 7.6 m

Note: Check system NPSH for actual suction lift

Applications

- wastewater treatment
- abattoirs and rendering plants
- septic effluent schemes
- mobile stormwater pumping
- emergency sewer by-pass
- winery crusher pits
- acidic and super-saline solutions
- gravel wash plants
- waste sumps and banded areas
- abrasive sludges
- site dewatering
- wool scouring plants
- tanker loading/unloading



Dimensions (mm)

