

DrainAce™ Compact Undersink Pump Station

The DrainAce Compact undersink pump station is the ultimate solution for applications where gravity discharge from a sink or other appliance to a sewer connection or treatment device e.g. grease arrestor is not available.



Prime examples of the uses of a DrainAce Compact are restaurants, basements of high-rise buildings, boardrooms, laboratories, doctor and dental surgeries, construction sites and portable buildings. Units are also available for greasy waste discharge to grease arrestors, and can handle discharge up to 40°C from dishwashers and glass washing machines.

Designed for quick and simple installations, the unit fits neatly into a single cupboard below a sink, and runs with virtually no noise. All in-tank plumbing is included with a discharge outlet at one end, with provision for vent and inlet connections on either end.

The chamber is moulded from chemical-resistant polyethylene and fitted with a rugged stainless steel 240V Global Water automatic submersible pump capable of passing up to 10mm soft solids.

Features

- Large capacity polyethylene tank for emergency storage and heat dilution
- Gas-tight screwed lid
- Quick-connect UniSeal fittings for inlet and vent
- Discharge ball valve
- Global Water stainless steel pump with float switch
- quick-release waterproof electrical connection for easy pump removal
- Kwikalarm™ K124 high level alarm option available

To specify or order a DrainAce pumping system, simply quote DrainAce Model GPD followed by the pump model number.

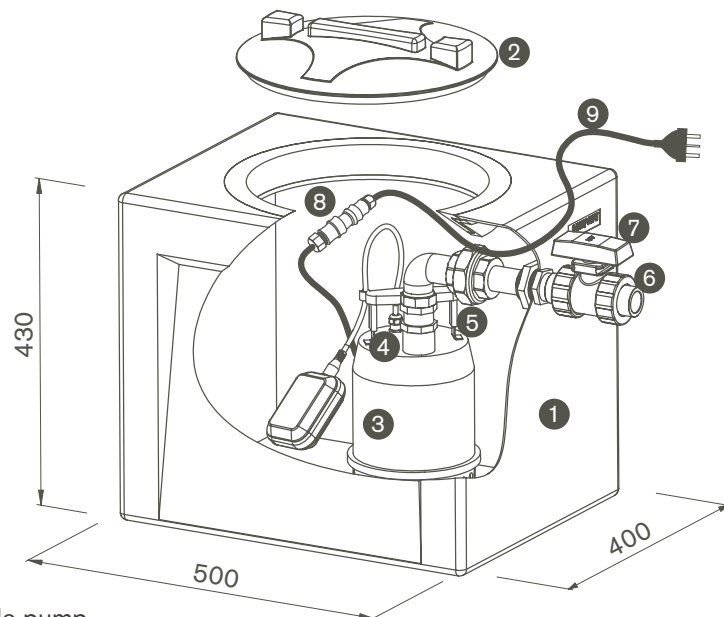
Specifications

Model	Pump Size	Solid Size	Volts (V)	Power (kW)	Amps (A)	Outlet (mm)
GPD200	GPD32-25	10	240	0.25	1.9	32
GPD300	GPD32-55	10	240	0.55	3.5	32

* To order with a Kwikalarm™ K124 optional high level alarm, add '+' to model number. e.g. GPD300+

Specification drawing

All measurements in mm.



- ① 90L polyethylene tank
- ② Polyethylene gas-tight screw lid
- ③ Global Water automatic submersible pump
- ④ Built-in non return valve
- ⑤ Barrel union on internal pipework for pump removal
- ⑥ 32mm discharge true union ball valve to allow system isolation and complete tank removal
- ⑦ 50mm inlet and vent connections with UniSeals supplied
- ⑧ IP68 quick connector for ease of pump removal
- ⑨ 3m powercable - suits standard single phase 10A GPO

Performance Curves

